



ROTO 50.26



**PERFORMANCE AND FEATURES**
**ROTO 50.26**
**ROTO 50.26 S**
**ROTO 50.26 S Plus**
**PERFORMANCE**

Total unladen weight (kg)	16600	16600	17300
Maximum capacity (kg)	4950	4950	4950
Lifting height (m)	25,9	25,9	25,9
Maximum reach (m)	22,9	22,9	22,9
Maximum operating height (m)	9,7	9,7	9,7
Maximum operating reach (m)	7	7	7
Capacity at maximum height (kg)	1500	1500	1500
Capacity at maximum reach (kg)	150	150	150
Lateral boom movement (mm)	-	-	-
Tilting correction (%)	-	± 12; ± 4	± 12; ± 4
Boom sections	5	5	5

**POWERTRAIN**

Turbo motor	Deutz TCD3.6	FPT NEF45	FPT NEF45
Displacement/cylinders	3600/4	4500/4	4500/4
Engine Power (kW/HP)	55,4/74	125/170	125/170
Anti-pollution technology	STAGE V, DPF	STAGE IV, SCR+DOC	STAGE IV, SCR+DOC
Reversible fan	-	-	-
Maximum speed (km/h)	11/25	11/40	11/40
Fuel tank (l)	150	150	150
AdBlue tank (l)	-	43	43
Hydrostatic transmission	● - 2V	● - 2V	● - 2V
EPD	●	●	●
Axles	Drop portal	Drop portal	Drop portal
Reduction hub	RR700	RR700	RR700
Machine brakes	Dry discs	Dry discs	Dry discs
Automatic parking brake	●	●	●

**HYDRAULIC**

Hydraulic pump	LS + FS	LS + FS	2 - LS + FS
Flow rate/pressure (l/min – bar)	103,5 - 250	138 - 250	138+100 - 250/230
Hydraulic tank	120	120	120
Hydraulic outlet at the top of the boom	●	●	●
Rear hydraulic outlets	-	-	-

**CAB**

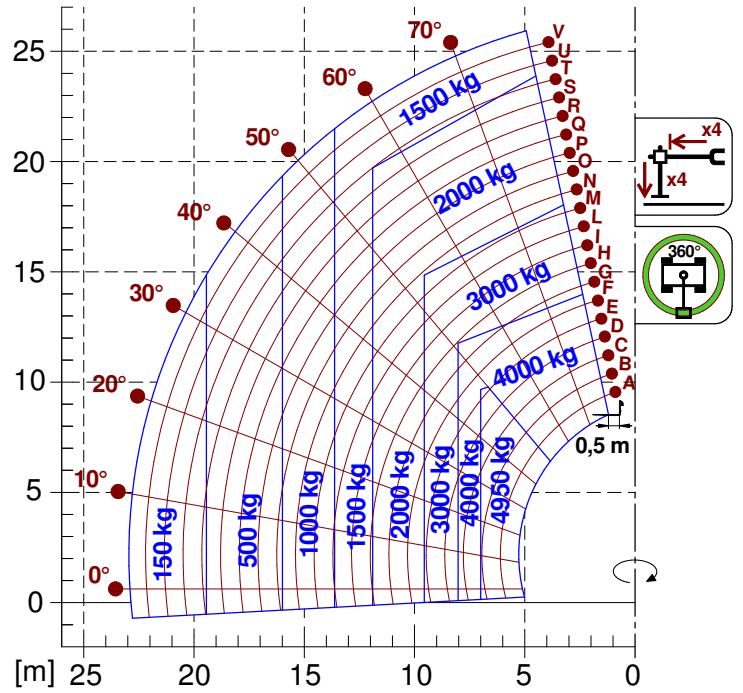
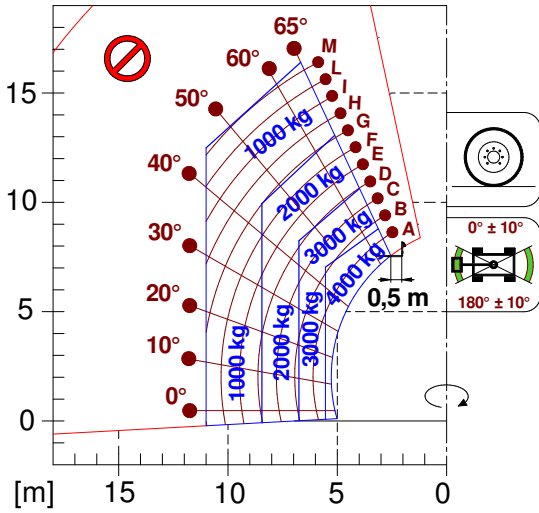
Cab configuration	Premium	Premium	Premium
MCDC	Complet	Complet	Complet
FOPS LIV II cab	●	●	●
ROPS cab	●	●	●
Cab commands	Electronic joystick control	Electronic joystick control	Electronic joystick control
Tilting Cab	-	-	●
Reverse shuttle	Dual Reverse	Dual Reverse	Dual Reverse

**CONFIGURATION**

Cab suspension	-	-	-
Boom suspension	-	-	-
Suspension on axles	-	●	●
Work headlights on cab	○	○	●
Sun blind	●	●	●
Tac-lock	●	●	●
Provision for a platform	●	●	●
Two floating forks	●	●	●
Inching-Control	-	-	-
Four-wheel drive	●	●	●
Four-wheel steering	●	●	●
Three steering modes	●	●	●
Standard tyres	18-22.5	18-22.5	18-22.5
Optional tyres	-	-	-
Stabilisers	Multiposition (2 mode: full retracted-extend.)	Multiposition (2 mode: full retracted-extend.)	Multiposition
Turret rotation	600°	continuous	continuous
Type approval as an agricultural tractor	-	-	-
Approval with PNEUMATIC braking	-	-	-
Approval with HYDRAULIC braking	-	-	-
PTO	-	-	-
3-point linkage	-	-	-

- Not Available. ● standard. ○ optional.

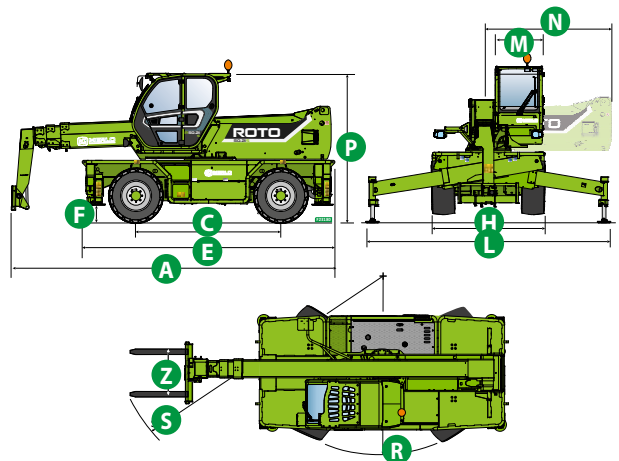
## LOAD CHARTS



ROTO50.26

## DIMENSIONS

	ROTO 50.26	ROTO 50.26 S	ROTO 50.26 S PLUS
A (mm)	7150	7150	7150
C (mm)	3070	3070	3070
E (mm)	5370	5370	5370
F (mm)	370	370	370
H (mm)	2430	2430	2430
L (mm)	5010	5010	5010
M (mm)	1010	1010	1010
N (mm)	2600	2600	2600
P (mm)	3120	3120	3120
R (mm)	3850	3850	3850
S (mm)	6310	6310	6310
Z (mm)	850	850	850



## GLOSSAR

<b>SCR</b>	<b>Selective Catalyst Reduction</b> , solution used for the reduction of NOx in the exhaust gases through the injection of a liquid - UREA (AdBlue) - into the exhaust gases.
<b>DPF</b>	<b>Diesel Particulate Filter</b> , a solution used to reduce fine particle emissions in exhaust gases
<b>DOC</b>	<b>Diesel Oxidation Catalyst</b> , a solution used to reduce carbon monoxide (CO) and hydrocarbons in exhaust gases
<b>EGR</b>	<b>Exhaust Gas Recirculation</b> , a solution used to reduce NOx in exhaust gases by recirculating gas inside the combustion chamber of the engine.
<b>1-2V</b>	1 or 2 speed <b>Merlo gearbox</b>
<b>CVTronic</b>	<b>Continuous variation Merlo gearbox</b> , for constant acceleration without loss of torque
<b>EPD</b>	<b>Eco Power Drive</b> , Merlo electronically-controlled hydrostatic transmission Electronic, enables effective RPM management in order to reduce overall fuel consumption by the machine
<b>EPD Plus</b>	In addition to the <b>EPD</b> Control, it is also possible to work using Speed Control (maintaining a constant travel speed) and Heavy Load (management of RPM in order to maximise performance for tasks such as: bucketing operations, heavy duty unloading, etc.)
<b>EPD Top</b>	In addition to the <b>EPD Plus</b> control function, this enables the RPM to be managed directly using the joystick
<b>Gear</b>	<b>Fixed displacement pump with gears</b> , combined with an open centre hydraulic distributor
<b>LS</b>	Variable displacement pump with <b>Load Sensing</b> control, combined with a closed centre hydraulic distributor
<b>LS+FS</b>	Variable displacement pump with <b>Load Sensing</b> control, combined with a closed centre hydraulic distributor equipped with solenoid valves and <b>Flow Sharing</b> control.
<b>Kabine ECO/PREMIUM</b>	<b>MODULAR</b> type cabin with simplified or PREMIUM equipment
<b>MCDC</b>	Merlo Dynamic Load Control, electronic control of the machine's anti-overturn system. • <b>Light</b> : Simplified version; • <b>Complete</b> : Version with display in cab.
<b>FOPS</b>	Falling object protective structure, the system which shields the operator from heavy objects falling onto the cab. Two levels: • <b>FOPS Liv I</b> : Object with a weight of 45 kg falling from 3 metres • <b>FOPS Liv II</b> : Object with a weight of 227 kg falling from 5.2 metres
<b>ROPS</b>	<b>Roll-over protection system</b> (or roll-over protection structure), the system that protects the operator if the vehicle rolls over
<b>Finger Touch</b>	Driving direction inversion system mounted on the steering column
<b>Dual Reverse</b>	Dual driving direction inversion system, on both the steering column and the joystick
<b>Tac-lock</b>	Hydraulic attachment clamping system controlled from the cab



### MERLO S.P.A.

Via Nazionale, 9  
12010 S. Defendente di Cervasca  
(Cuneo) Italia  
Tel. +39 0171 614111  
Fax +39 0171 684101

[info@merlo.com](mailto:info@merlo.com)  
[www.merlo.com](http://www.merlo.com)

