



PANORAMIC P40.13



PERFORMANCE AND FEATURES
P40.13
P40.13 Plus
PERFORMANCE

Total unladen weight (kg)
 Maximum capacity (kg)
 Lifting height (m)
 Maximum reach (m)
 Maximum operating height (m)
 Maximum operating reach (m)
 Capacity at maximum height (kg)
 Capacity at maximum reach (kg)
 Lateral boom movement (mm)
 Tilting correction (%)
 Boom sections

9300
 4000
 12,5
 8,74
 10,9
 3,3
 3500
 1000
 ± 340
 +/- 8
 3

9300
 4000
 12,5
 8,74
 10,9
 3,3
 3500
 1000
 ± 340
 +/- 8
 3

POWERTRAIN

Turbo motor
 Displacement/cylinders
 Engine Power (kW/HP)
 Anti-pollution technology
 Reversible fan
 Maximum speed (km/h)
 Fuel tank (l)
 AdBlue tank (l)
 Hydrostatic transmission
 EPD

Deutz TD2.9
 2900/4
 55,4/75
 STAGE IIIB, DOC
 -
 9/33
 140
 -
 ● - 2V
 -

Deutz TCD3.6
 3600/4
 75/102
 STAGE IV, SCR+DOC
 -
 14/40
 140
 18
 ● - 2V
 ●

Axles
 Reduction hub
 Machine brakes
 Automatic parking brake

Drop portal
 RR700
 Dry discs
 ●

Drop portal
 RR700
 Dry discs
 ●

HYDRAULIC

Hydraulic pump
 Flow rate/pressure (l/min – bar)
 Hydraulic tank
 Hydraulic outlet at the top of the boom
 Rear hydraulic outlets

LS
 104 - 250
 100
 ●
 ○

LS
 104 - 250
 100
 ●
 ○

CAB

Cab configuration
 MCDC
 FOPS LIV II cab
 ROPS cab
 Cab commands
 Tilting Cab
 Reverse shuttle

Standard
 Light
 ●
 ●
 Electronic joystick control
 -
 Dual reverse

Standard
 Complet
 ●
 ●
 Electronic joystick control
 -
 Dual reverse

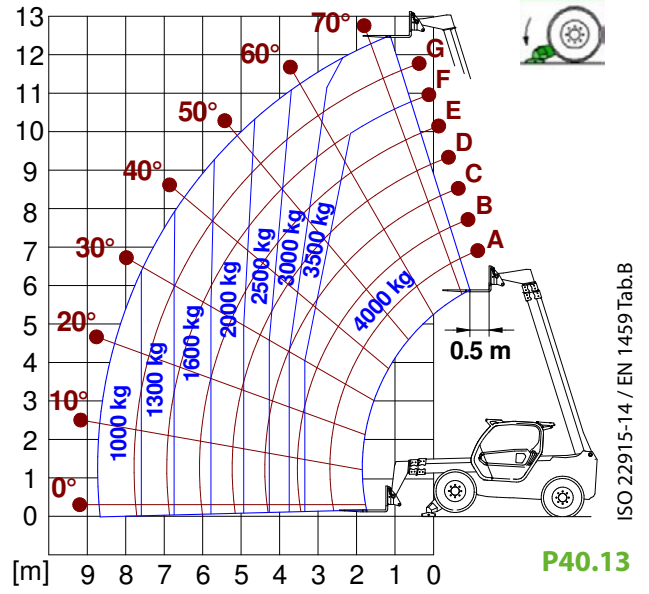
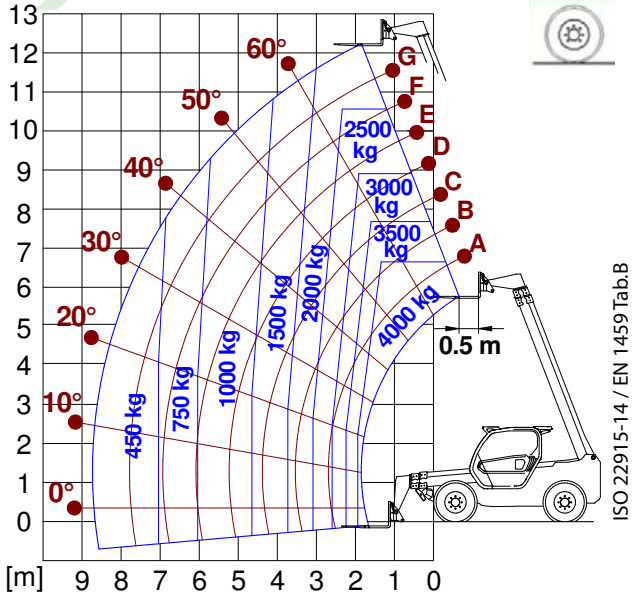
CONFIGURATION

Cab suspension
 Boom suspension
 Suspension on axles
 Work headlights on cab
 Sun blind
 Tac-lock
 Provision for a platform
 Two floating forks
 Inching-Control
 Four-wheel drive
 Four-wheel steering
 Three steering modes
 Standard tyres
 Optional tyres
 Stabilisers
 Turret rotation
 Type approval as an agricultural tractor
 Approval with PNEUMATIC braking
 Approval with HYDRAULIC braking
 PTO
 3-point linkage

-
 ○
 -
 ○
 ○
 ●
 ○
 ●
 ●
 ●
 ●
 400/70-20
 405/70-24
 Narrow
 -
 -
 -
 -
 -

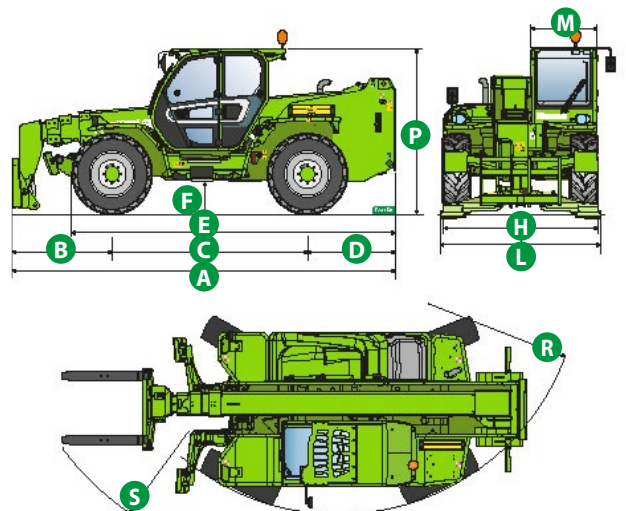
-
 ○
 -
 ○
 ○
 ●
 ○
 ●
 ●
 ●
 ●
 400/70-20
 405/70-24
 Narrow
 -
 -
 -
 -
 -

LOAD CHARTS



DIMENSIONS

	P40.13	P40.13 Plus	
A (mm)	5410	5410	
B (mm)	1690	1690	
C (mm)	2810	2810	
D (mm)	910	910	
E (mm)	4260	4260	
F (mm)	375	375	
H (mm)	2240	2240	
L (mm)	2380	2380	
M (mm)	1010	1010	
P (mm)	2425	2425	
R (mm)	3920	3920	
S (mm)	4940	4940	



GLOSSAR

SCR	Selective Catalyst Reduction , solution used for the reduction of NOx in the exhaust gases through the injection of a liquid - UREA (AdBlue) - into the exhaust gases.
DPF	Diesel Particulate Filter , a solution used to reduce fine particle emissions in exhaust gases
DOC	Diesel Oxidation Catalyst , a solution used to reduce carbon monoxide (CO) and hydrocarbons in exhaust gases
EGR	Exhaust Gas Recirculation , a solution used to reduce NOx in exhaust gases by recirculating gas inside the combustion chamber of the engine.
1-2V	1 or 2 speed Merlo gearbox
CVTronic	Continuous variation Merlo gearbox , for constant acceleration without loss of torque
EPD	Eco Power Drive , Merlo electronically-controlled hydrostatic transmission Electronic, enables effective RPM management in order to reduce overall fuel consumption by the machine
EPD Plus	In addition to the EPD Control, it is also possible to work using Speed Control (maintaining a constant travel speed) and Heavy Load (management of RPM in order to maximise performance for tasks such as: bucketing operations, heavy duty unloading, etc.)
EPD Top	In addition to the EPD Plus control function, this enables the RPM to be managed directly using the joystick
Gear	Fixed displacement pump with gears , combined with an open centre hydraulic distributor
LS	Variable displacement pump with Load Sensing control, combined with a closed centre hydraulic distributor
LS+FS	Variable displacement pump with Load Sensing control, combined with a closed centre hydraulic distributor equipped with solenoid valves and Flow Sharing control.
Kabine ECO/PREMIUM	MODULAR type cabin with simplified or PREMIUM equipment
MCDC	Merlo Dynamic Load Control, electronic control of the machine's anti-overturn system. • Light : Simplified version; • Complete : Version with display in cab.
FOPS	Falling object protective structure, the system which shields the operator from heavy objects falling onto the cab. Two levels: • FOPS Liv I : Object with a weight of 45 kg falling from 3 metres • FOPS Liv II : Object with a weight of 227 kg falling from 5.2 metres
ROPS	Roll-over protection system (or roll-over protection structure), the system that protects the operator if the vehicle rolls over
Finger Touch	Driving direction inversion system mounted on the steering column
Dual Reverse	Dual driving direction inversion system, on both the steering column and the joystick
Tac-lock	Hydraulic attachment clamping system controlled from the cab



MERLO S.P.A.

Via Nazionale, 9
12010 S. Defendente di Cervasca
(Cuneo) Italia
Tel. +39 0171 614111
Fax +39 0171 684101

info@merlo.com
www.merlo.com

