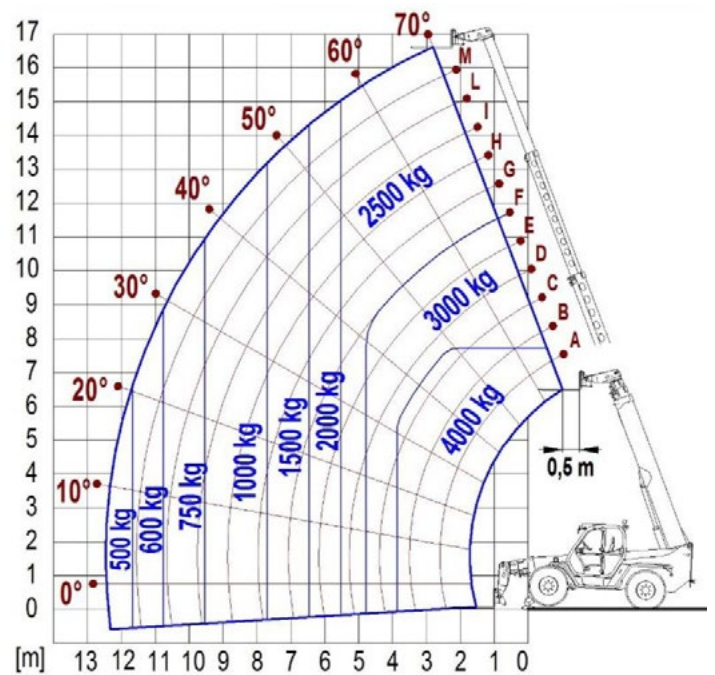




PANORAMIC P40.17



PERFORMANCE AND FEATURES	P40.17	P40.17Plus	
PERFORMANCE			
Total unladen weight (kg)	10580	10780	
Maximum capacity (kg)	4000	4000	
Lifting height (m)	16,7	16,7	
Maximum reach (m)	12,5	12,5	
Maximum operating height (m)	7,7	7,7	
Maximum operating reach (m)	3,9	3,9	
Capacity at maximum height (kg)	2500	2500	
Capacity at maximum reach (kg)	500	500	
Lateral boom movement (mm)	+/- 435	+/- 435	
Tilting correction (%)	+/- 10	+/- 10	
Boom sections	4	4	
POWERTRAIN			
Turbo motor	Deutz TD2.9	Deutz TCD3.6	
Displacement/cylinders	2900/4	3600/4	
Engine Power (kW/HP)	55,4/75	75/102	
Anti-pollution technology	EURO IIIB, DOC	EURO IV, SCR+DOC	
Reversible fan	-	-	
Maximum speed (km/h)	33	40	
Fuel tank (l)	140	140	
AdBlue tank (l)	-	18	
Hydrostatic transmission	● - 2V	● - 2V	
EPD	-	●	
Axles	Portal	Portal	
Reduction hub	RR640	RR640	
Machine brakes	Dry disc	Dry disc	
Automatic parking brake	●	●	
HYDRAULIC			
Hydraulic pump	Load Sensing	Load Sensing	
Flow rate/pressure (l/min – bar)	115 - 210	108 - 210	
Hydraulic tank	105	105	
Hydraulic outlet at the top of the boom	●	●	
Rear hydraulic outlets	○	○	
CAB			
Cab configuration	2004 Cab	2004 Cab	
MCDC	Light	Full	
FOPS LIV II cab	●	●	
ROPS cab	●	●	
Cab commands	2 Levers	Electromechanic joystick	
Tilting Cab	-	-	
Reverse shuttle	Finger touch	Finger touch	
CONFIGURATION			
Cab suspension	-	-	
Boom suspension	-	-	
Suspension on axles	○	○	
Work headlights on cab	○	○	
Sun blind	○	○	
Tac-lock	●	●	
Provision for a platform	○	○	
Two floating forks	●	●	
Inching-Control	●	●	
Four-wheel drive	●	●	
Four-wheel steering	●	●	
Three steering modes	●	●	
Standard tyres	405/70-24"	405/70-24"	
Optional tyres	-	-	
Stabilisers	Narrow	Narrow	
Turret rotation	-	-	
Type approval as an agricultural tractor	-	-	
Approval with PNEUMATIC braking	-	-	
Approval with HYDRAULIC braking	-	-	
PTO	-	-	
3-point linkage	-	-	
DIMENSION			
Width (mm)	2400	2400	
Height (mm)	2510	2510	
Length (mm)	5795	5795	
Wheelbase (mm)	2875	2875	



P40.17

GLOSSAR

SCR	Selective Catalyst Reduction , solution used for the reduction of NOx in the exhaust gases through the injection of a liquid - UREA (AdBlue) - into the exhaust gases.
DPF	Diesel Particulate Filter , a solution used to reduce fine particle emissions in exhaust gases
DOC	Diesel Oxidation Catalyst , a solution used to reduce carbon monoxide (CO) and hydrocarbons in exhaust gases
EGR	Exhaust Gas Recirculation , a solution used to reduce NOx in exhaust gases by recirculating gas inside the combustion chamber of the engine.
1-2V	1 or 2 speed Merlo gearbox
CVTronic	Continuous variation Merlo gearbox , for constant acceleration without loss of torque
EPD	Eco Power Drive , Merlo electronically-controlled hydrostatic transmission Electronic, enables effective RPM management in order to reduce overall fuel consumption by the machine
EPD Plus	In addition to the EPD Control, it is also possible to work using Speed Control (maintaining a constant travel speed) and Heavy Load (management of RPM in order to maximise performance for tasks such as: bucketing operations, heavy duty unloading, etc.)
EPD Top	In addition to the EPD Plus control function, this enables the RPM to be managed directly using the joystick
Gear	Fixed displacement pump with gears , combined with an open centre hydraulic distributor
LS	Variable displacement pump with Load Sensing control, combined with a closed centre hydraulic distributor
LS+FS	Variable displacement pump with Load Sensing control, combined with a closed centre hydraulic distributor equipped with solenoid valves and Flow Sharing control.
Kabine ECO/PREMIUM	MODULAR type cabin with simplified or PREMIUM equipment
MCDC	Merlo Dynamic Load Control, electronic control of the machine's anti-overflow system. • Light : Simplified version; • Complete : Version with display in cab.
FOPS	Falling object protective structure, the system which shields the operator from heavy objects falling onto the cab. Two levels: • FOPS Liv I : Object with a weight of 45 kg falling from 3 metres • FOPS Liv II : Object with a weight of 227 kg falling from 5.2 metres
ROPS	Roll-over protection system (or roll-over protection structure), the system that protects the operator if the vehicle rolls over
Finger Touch	Driving direction inversion system mounted on the steering column
Dual Reverse	Dual driving direction inversion system, on both the steering column and the joystick
Tac-lock	Hydraulic attachment clamping system controlled from the cab



MERLO S.P.A.

Via Nazionale, 9
12010 S. Defendente di Cervasca
(Cuneo) Italia

Tel. +39 0171 614111

Fax +39 0171 684101

info@merlo.com

www.merlo.com

